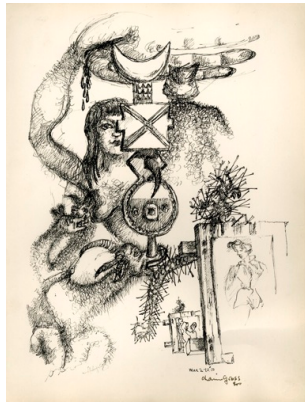


FANTASY Chaim Gross Drawings 1944-50

October 7, 2010 – March 31, 2011



Surrealist drawings and watercolors from the notebooks of Chaim Gross and related African, Oceanic and Western art from the Renee and Chaim Gross Foundation Collection

September 30, 2010, New York-- The Renee and Chaim Gross Foundation is pleased to announce *Fantasy: Chaim Gross Drawings 1944-1950*, the third exhibition at the Renee and Chaim Gross Center for the Arts. The installation, curated by Foundation Director Susan Fisher and Archivist Zak Vreeland, features two dozen works on paper by the sculptor Chaim Gross (1904-1991), primarily known for his wood and bronze figures.

Beginning in 1944 Gross, long a draftsman of figure studies, sculpture studies, landscapes and other subjects from observation, began drawing in his notebooks odd creatures from his imagination which soon developed into Bosch-like scenes of conflict and sex. Gross made these “fantasy drawings” daily for several years, and with some frequency for the next four decades, while continuing to create his realistic sculptures. During the war years images of Hitler, Roosevelt and soldiers appear; afterwards his family, his African art pieces, and events from his daily life are interwoven in scenes with stray limbs and bird-headed monsters. Along with Gross’s drawings the exhibition includes several of his sculptures, Surrealist work by Max Ernst and Federico Castellon, African and Oceanic art, and photos, letters and sketchbooks, all from the artist’s collection.

The Renee and Chaim Gross Center for the Arts is supported by the Renee and Chaim Gross Foundation, whose mission is to further the understanding of the life and work of American sculptor Chaim Gross and his contemporaries. The Center also seeks to advance the study of American art and to contribute to the artistic and intellectual life of downtown Manhattan. The Center and Foundation offices are located in the artist’s historic West Village townhouse and longtime studio at 526 LaGuardia Place, adjacent to the NYU campus.

Exhibition opening on Thursday, October 7, 2010, 6-8 pm. The exhibition will be on view until March 31, 2011 on Thursdays and Fridays from 1-5 pm or by appointment. Please contact Susan Fisher (sfisher@rcgrossfoundation.org) for more information or visit our website at www.rcgrossfoundation.org.